

## About the Snapshot

This report provides a snapshot of the Ontario Centres for Learning, Research, and Innovation in Long-Term Care (LTC) Dementia Care Preparedness Initiative, based on data collected from:



**274**  
Ontario LTC homes

Jan 1, 2025

Mar 31, 2025



The data illustrates LTC homes' readiness for an organized dementia care program, highlighting:

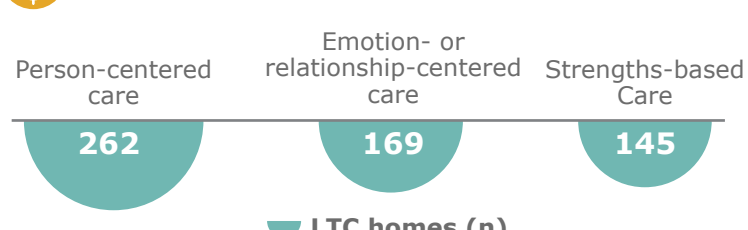
- Current practices in education
- Environmental factors
- Approaches
- Future aspirations



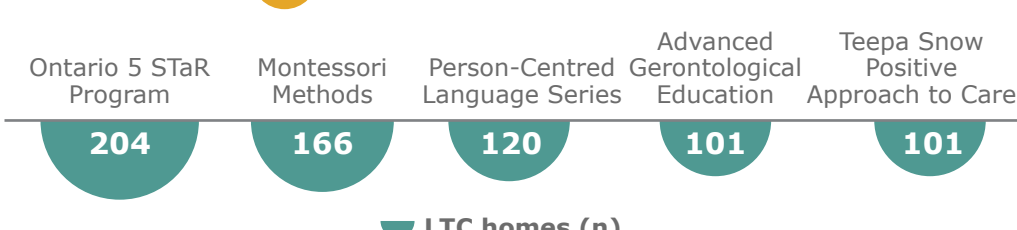
This report is a valuable resource for long-term care homes, and organizations involved in supporting the long-term care sector.

## Current Dementia Care Trends in Ontario Long-Term Care

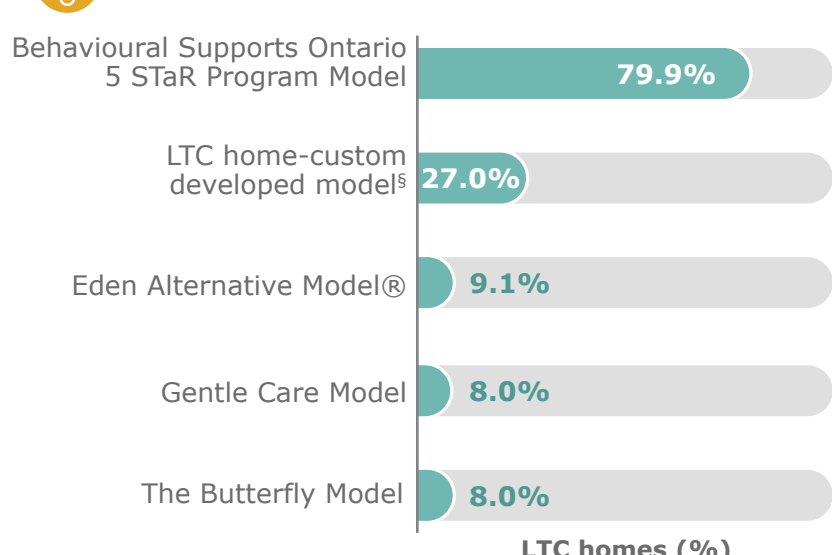
### Overall Guiding Care Philosophies\*



### Dementia Care Approaches\*

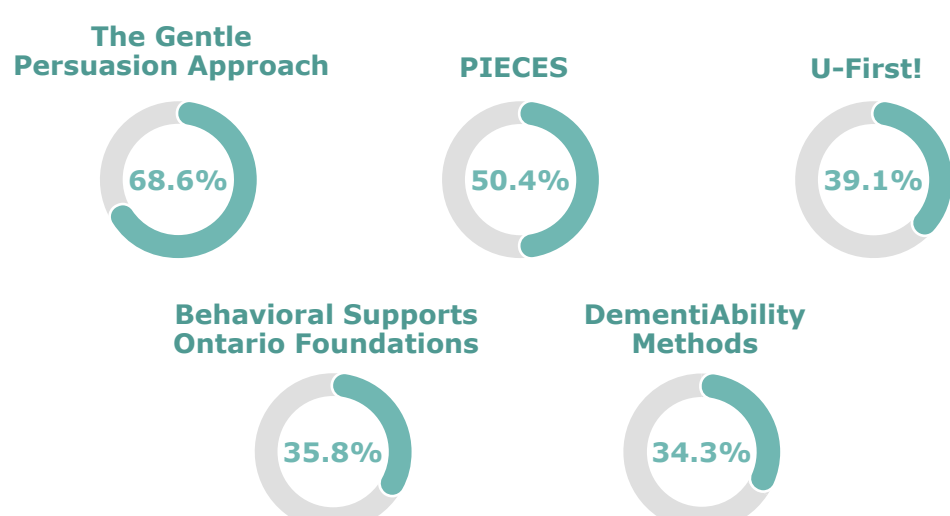


### Models Used for Dementia Care

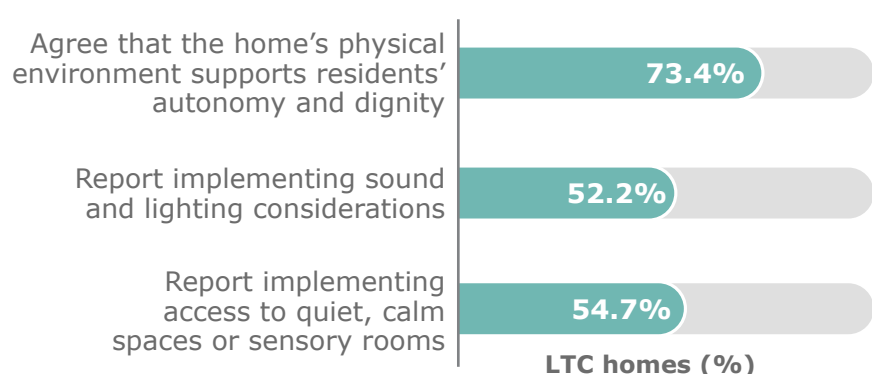


### Education and Training

Within the past three years, team members and/or students completing clinical placements have received training in\*:



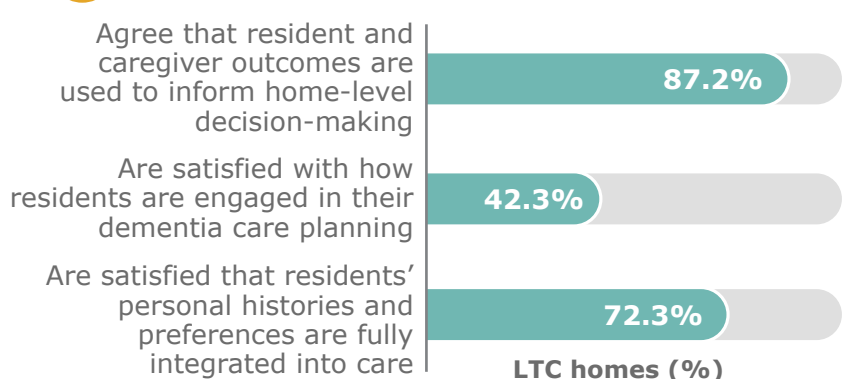
### Physical Environment



**20.1%** agree that **volunteers** had received training in dementia care

**22.3%** agree that **caregivers** had received training in dementia care

### Resident Engagement

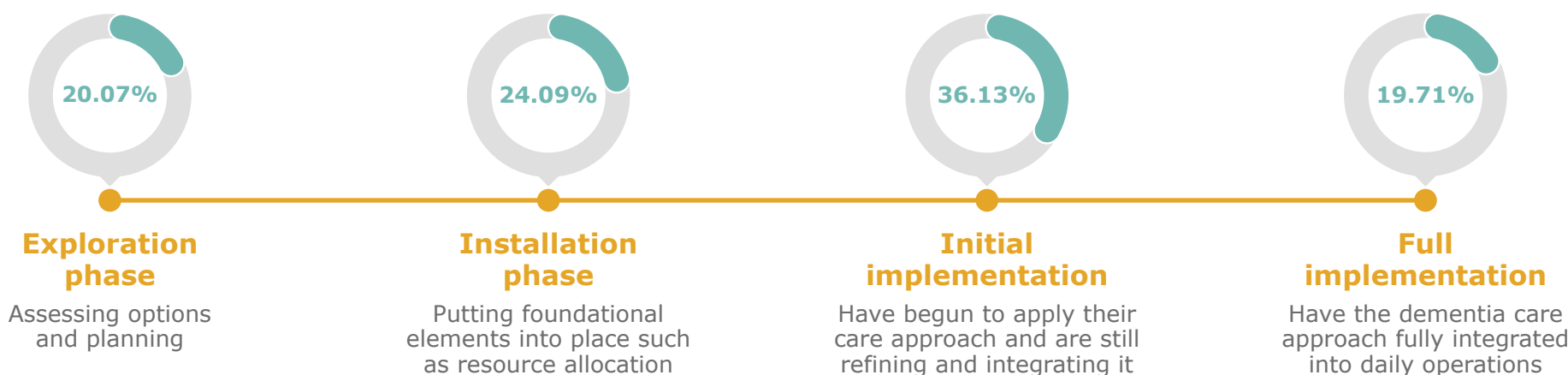


### Health Human Resources

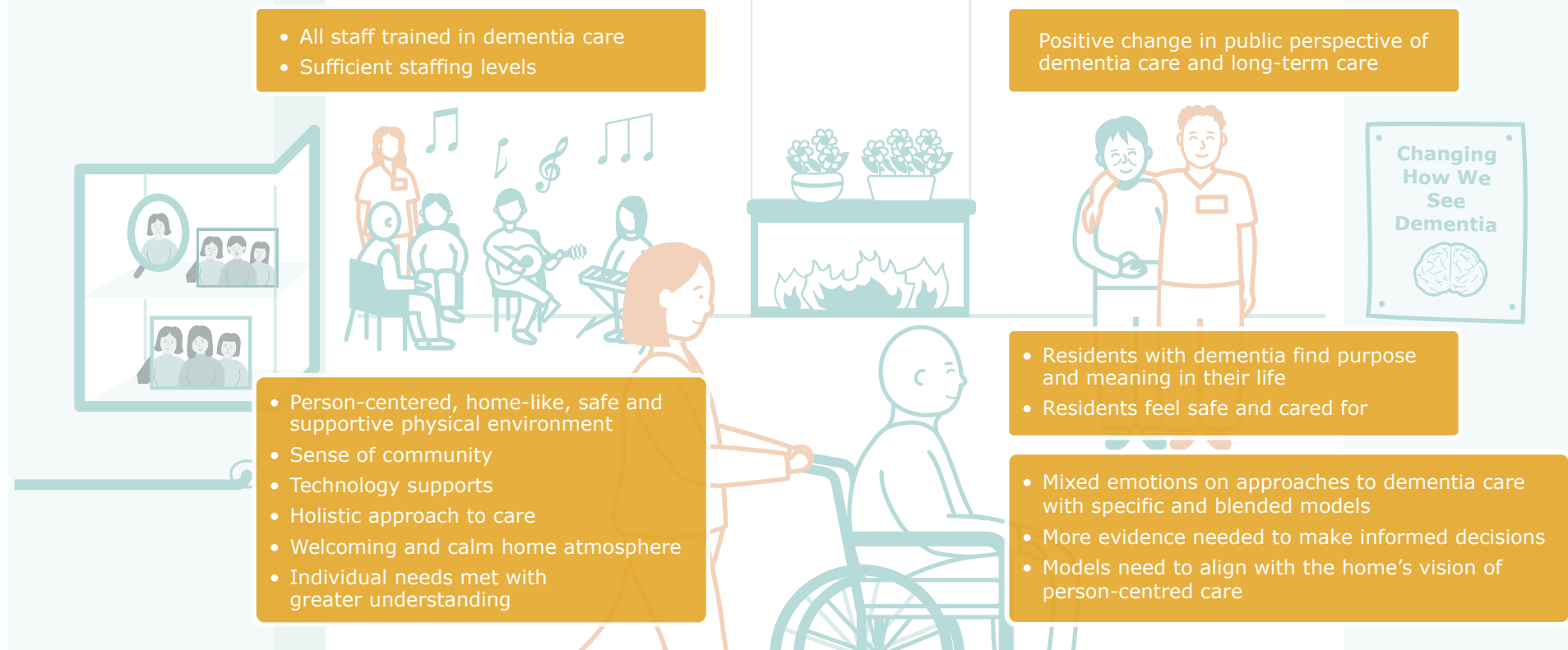


\*LTC homes could select more than one option. <sup>§</sup>For example, Imagine (6.2%), Living in My Today (5.1%), CareTO (2.2%).

## Dementia Care Readiness



## Long-term Care Homes' Vision for Dementia Care by 2035



## Data-Driven Recommendations for Dementia Care in Long-Term Care

<b>Long-term care homes</b>	<b>Develop partnerships with sector support organizations</b> Provide education and training for: • Families • Care partners • Volunteers • Residents	<b>Designate a dedicated dementia care programming role</b> Responsible for oversight and coordination of programming (e.g., Dementia Care Coordinator)	<b>Use indicators that matter</b> Use dementia care indicators that are meaningful to team members, residents, and care partners for the purpose of home-level decision making.	<b>Participate in peer-support networks</b> Optimize knowledge exchange and leverage strategies that are working.
<b>Policymakers</b>	<b>Provide consistent access to specialized implementation expertise</b> Drive lasting improvements in dementia care.	<b>LTC homes need the autonomy to choose model</b> Allow selection of model that best aligns with the needs of residents and care teams.	<b>Provide flexibility in funding streams</b> Support LTC homes in implementing and sustaining an organized dementia care program.	<b>Increase existing training dedicated funds</b> For regular and ongoing education and training of volunteers, care partners, and team members.
<b>Researchers</b>	<b>Develop and track dementia care indicators that matter</b> Meaningful and useful indicators to LTC homes, residents, and care partners for the purpose of transforming care.		<b>Identify current evidence and knowledge gaps</b> For dementia care approaches and practices.	
<b>Sector supporting organizations</b>	<b>Build awareness and partner with LTC homes</b> Provide education and training on dementia care for: • Families • Care partners • Volunteers • Residents	<b>Mobilize dementia care evidence</b> Mobilize the evidence on dementia care approaches and practices for use by LTC homes.	<b>Develop solutions for challenges</b> Help LTC homes with dementia care delivery challenges.	<b>Launch a public awareness campaign</b> Build community support, reduce stigma and foster compassionate understanding of people living with dementia in LTC.
				<b>Coordinate LTC home peer-support networks</b> Optimize knowledge exchange and leverage dementia care strategies that are working.

CLRI at Baycrest thanks everyone who contributed to this Snapshot.

Contact us at [ontarioclri@baycrest.org](mailto:ontarioclri@baycrest.org) if you are interested in learning more about the initiative.

The Dementia Care Preparedness Initiative is funded by the Ontario Ministry of Long-Term Care.